

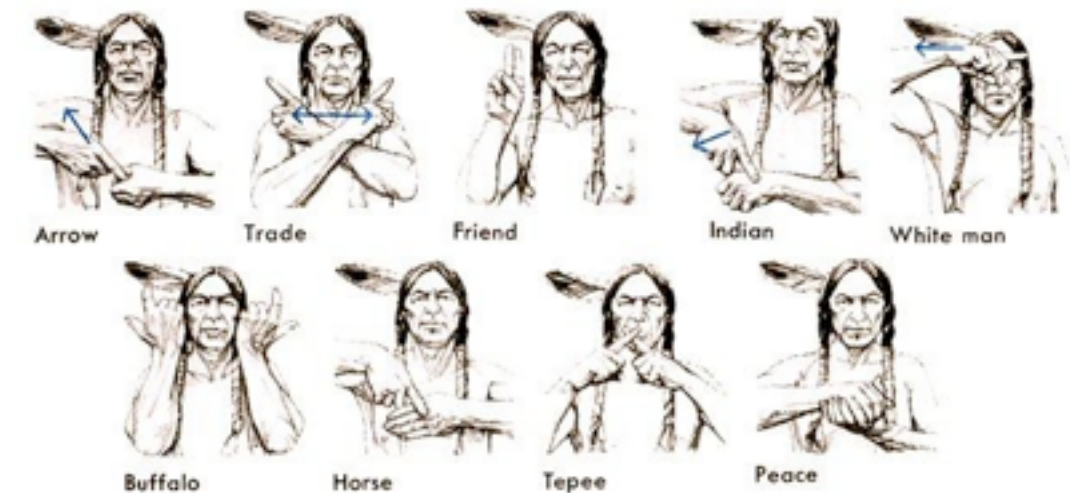
Lesson 00

Intro to ABC's

Toby Fitch

There are many different kinds of sign languages.

- Around 200 exist and are in use today.
- American Sign Language (ASL), French Sign Language (FSL), British Sign Language (BSL)
- ASL is mainly used in USA and Canada, and some other countries.



Not all Deaf people use sign language

There is not always a sign for everything

Like accents, sign language has accents too! (And dialects)

Why foundations of ASL is extremely important (presentation, orientation)

You may not use your voice, and no, whispers do not count.

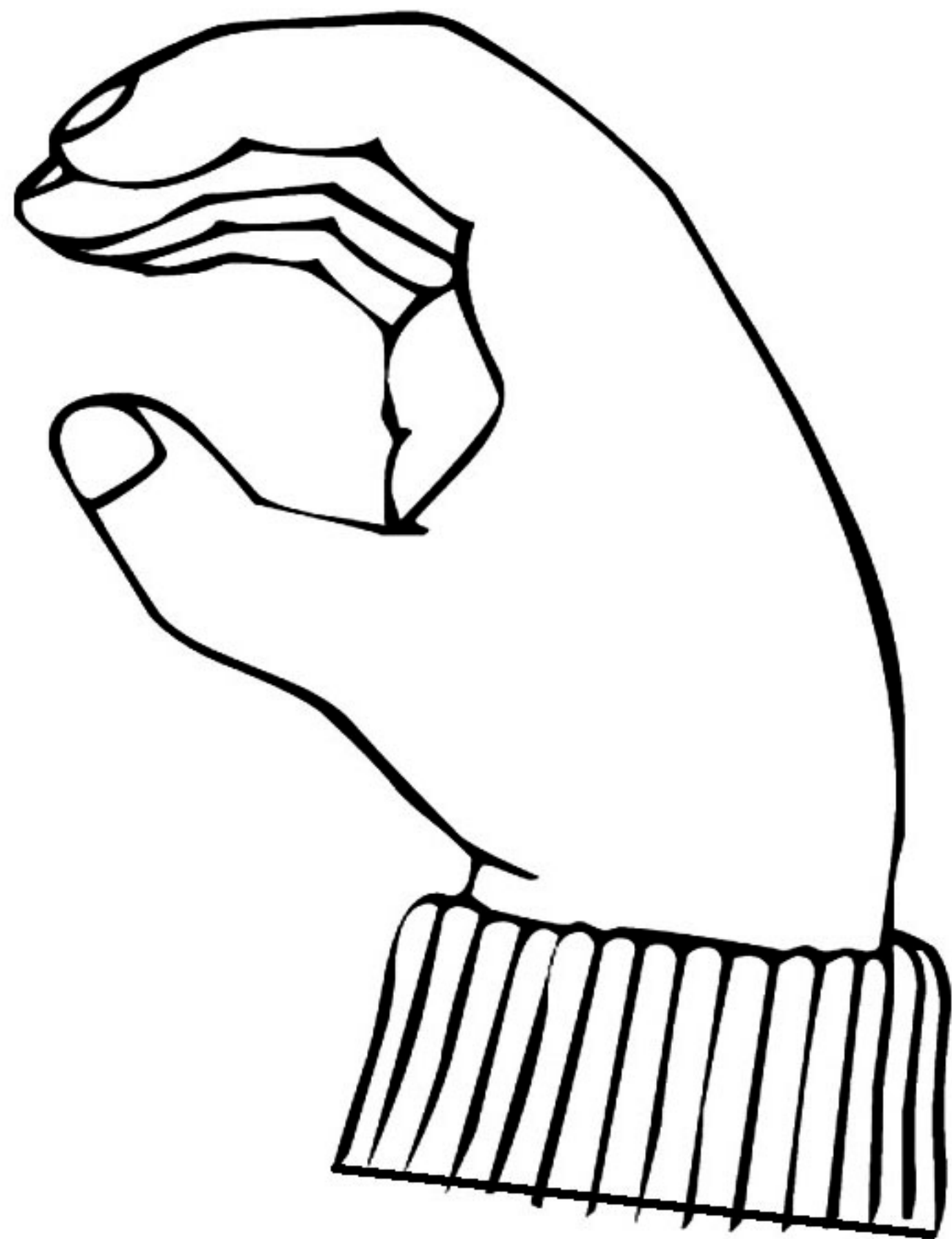
If you need to get someone's attention, wave, stomp the floor, etc.

If you don't understand, please, let me know.

Have fun!













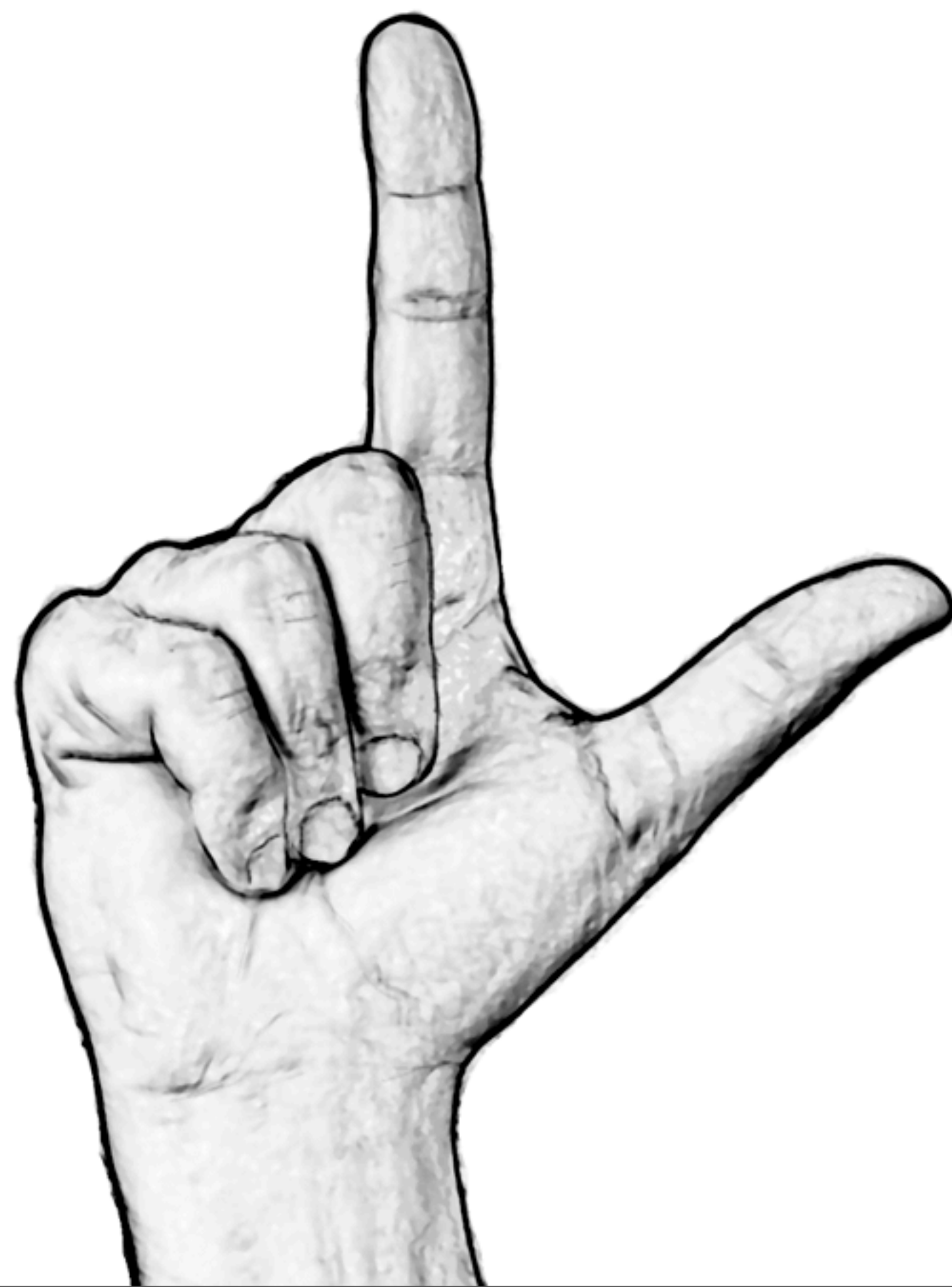


























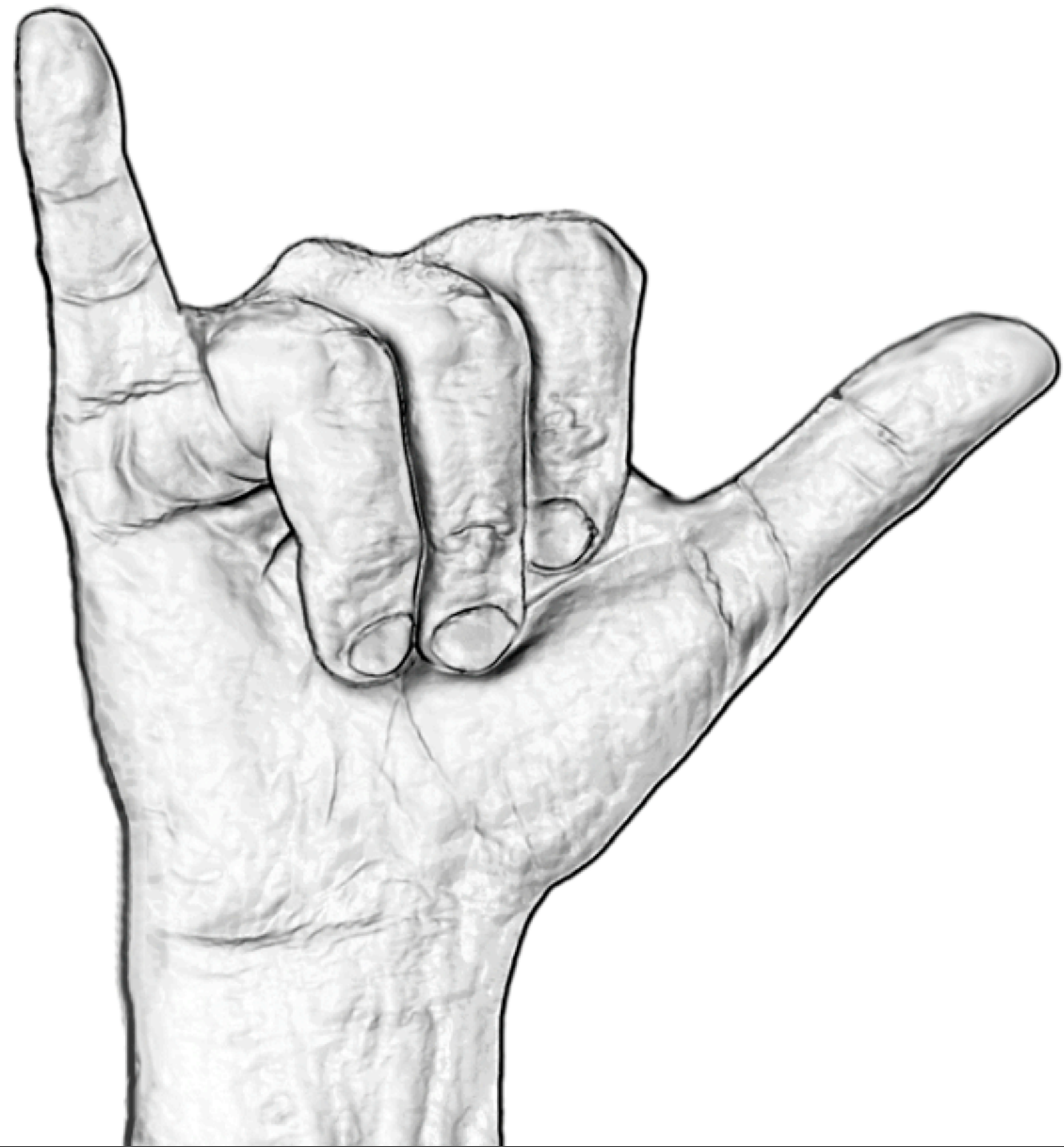


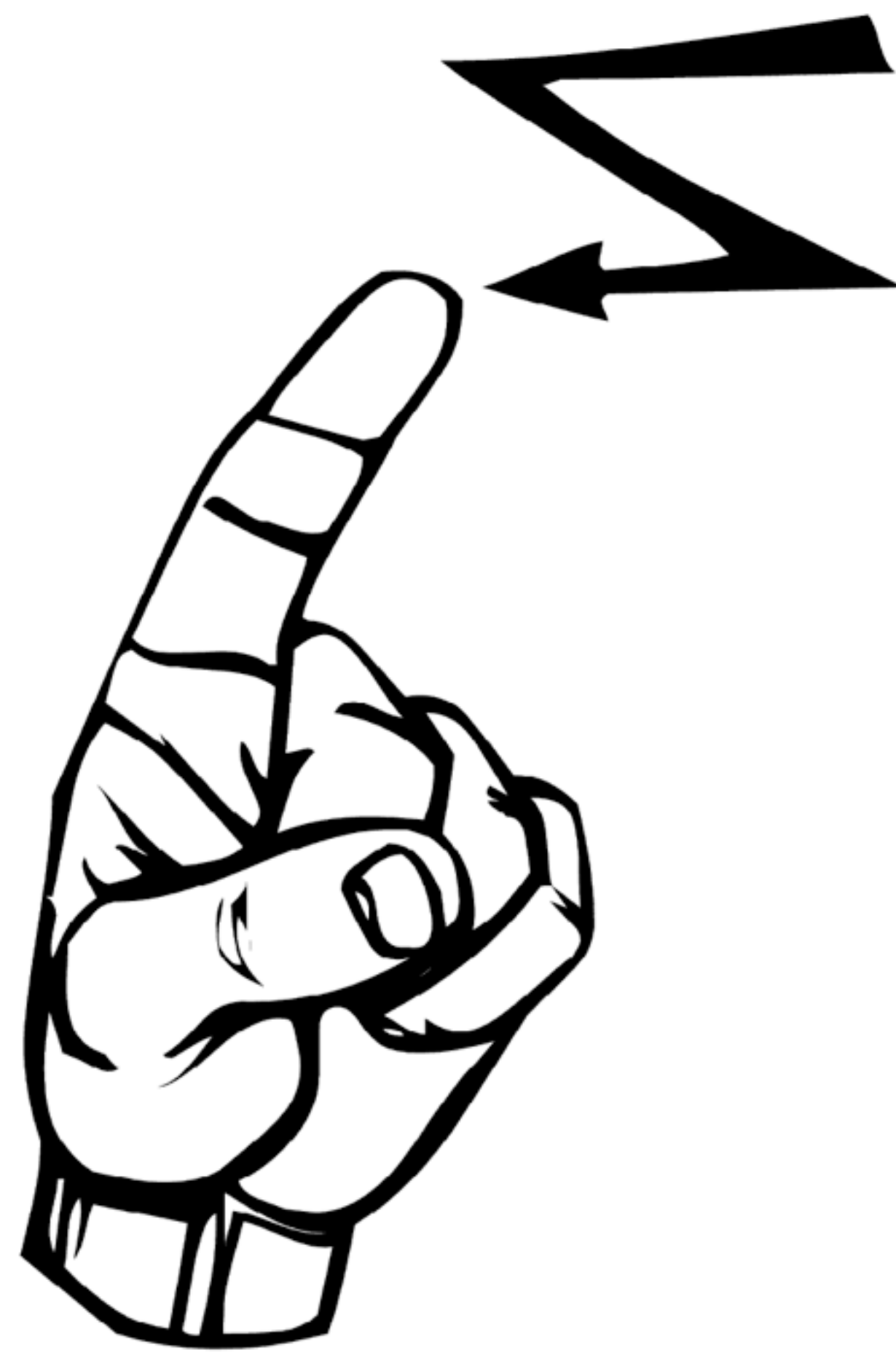
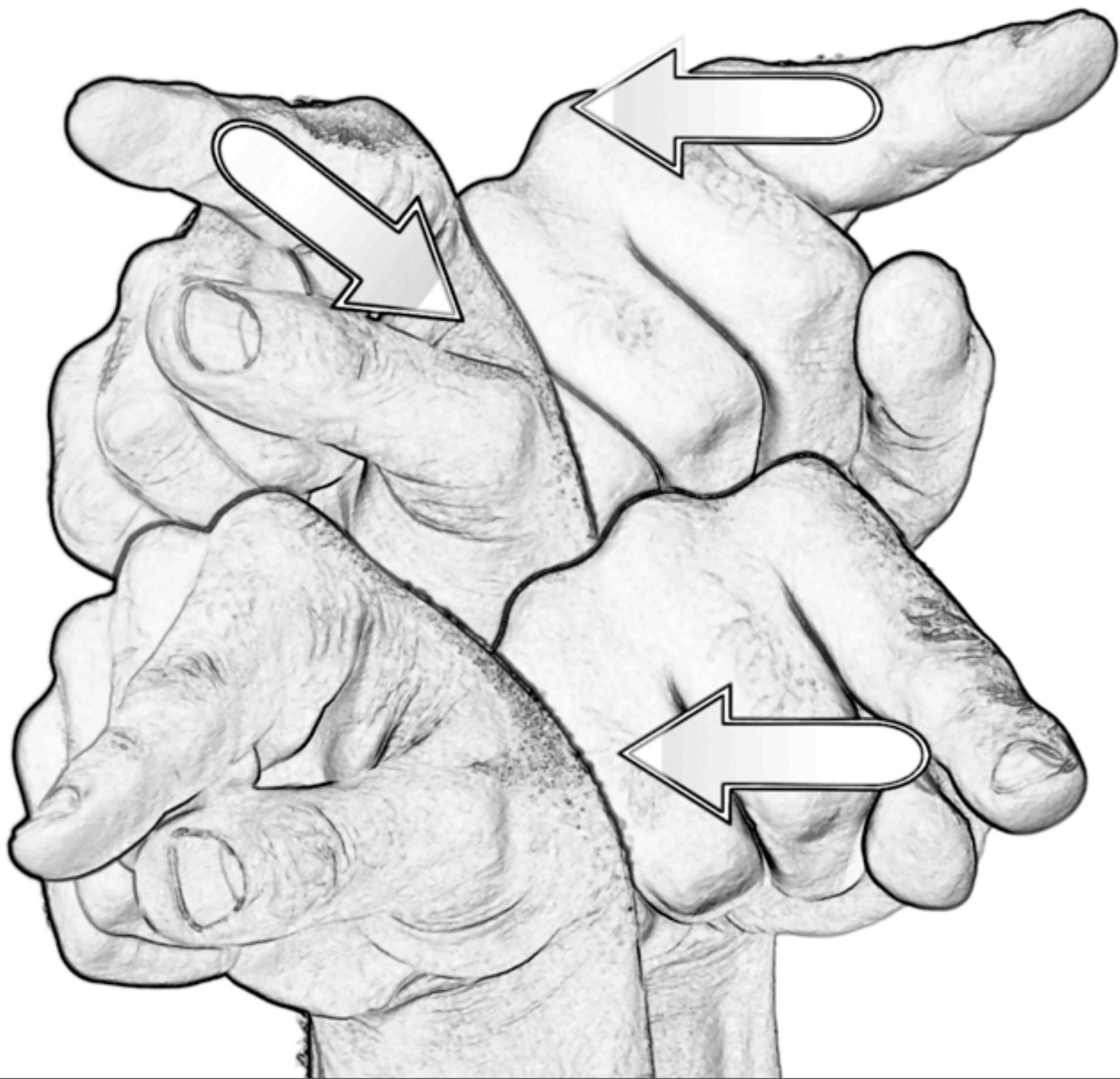










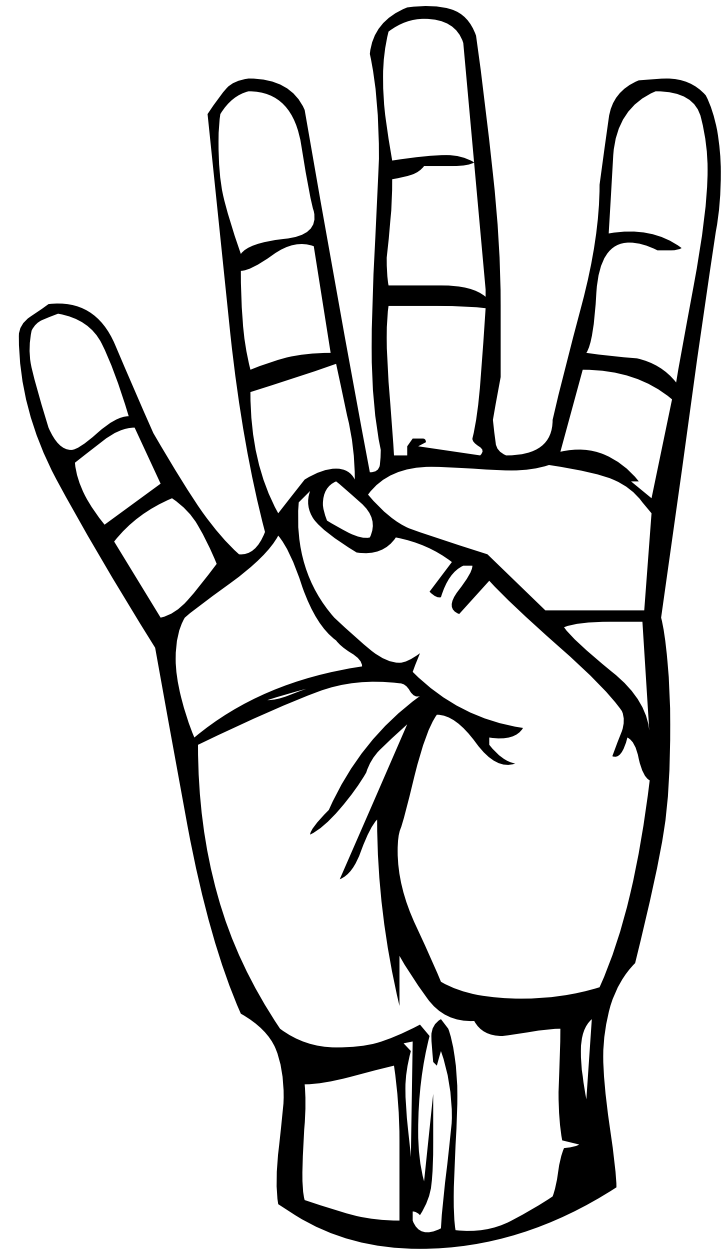


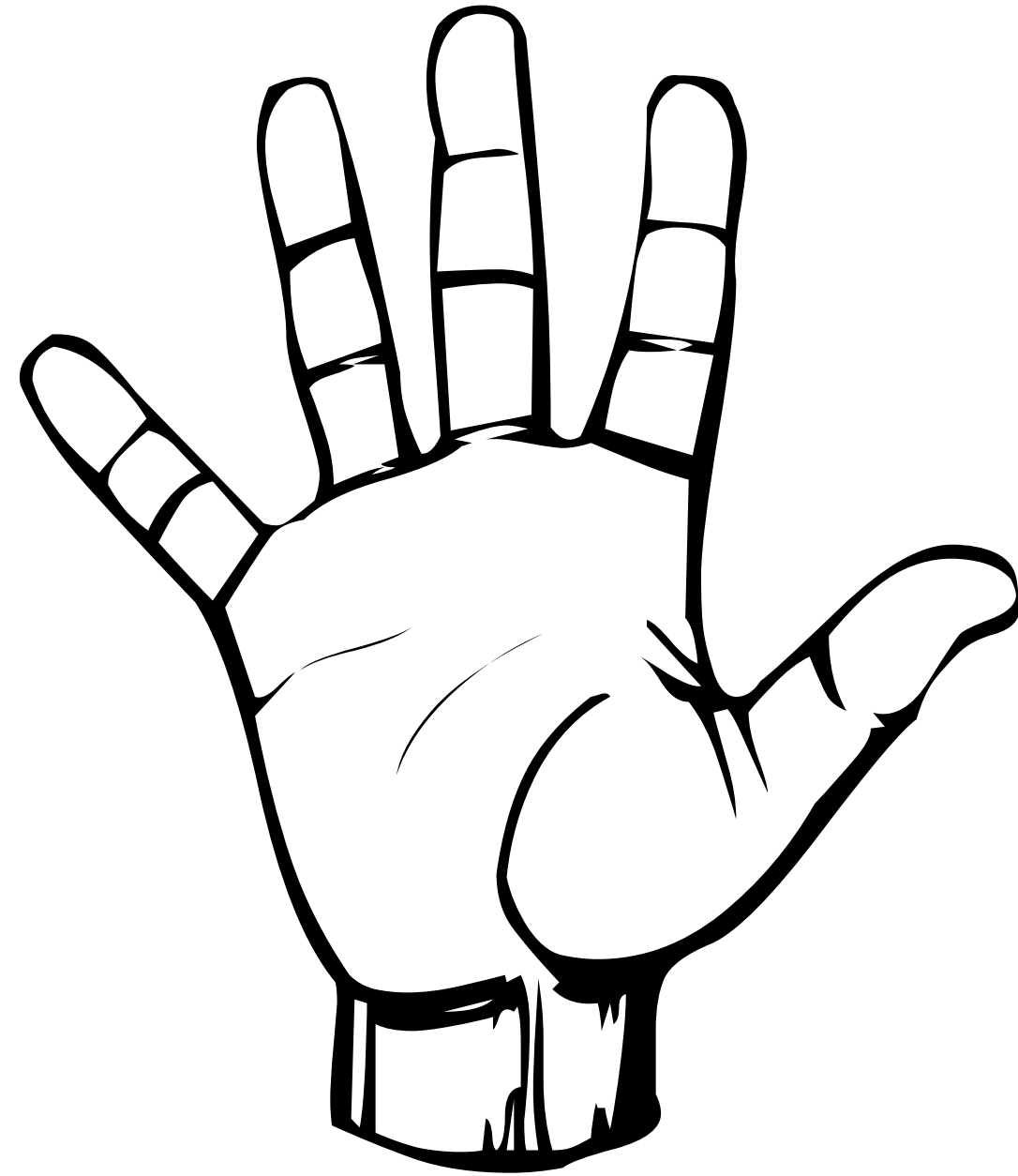
NUMBERS





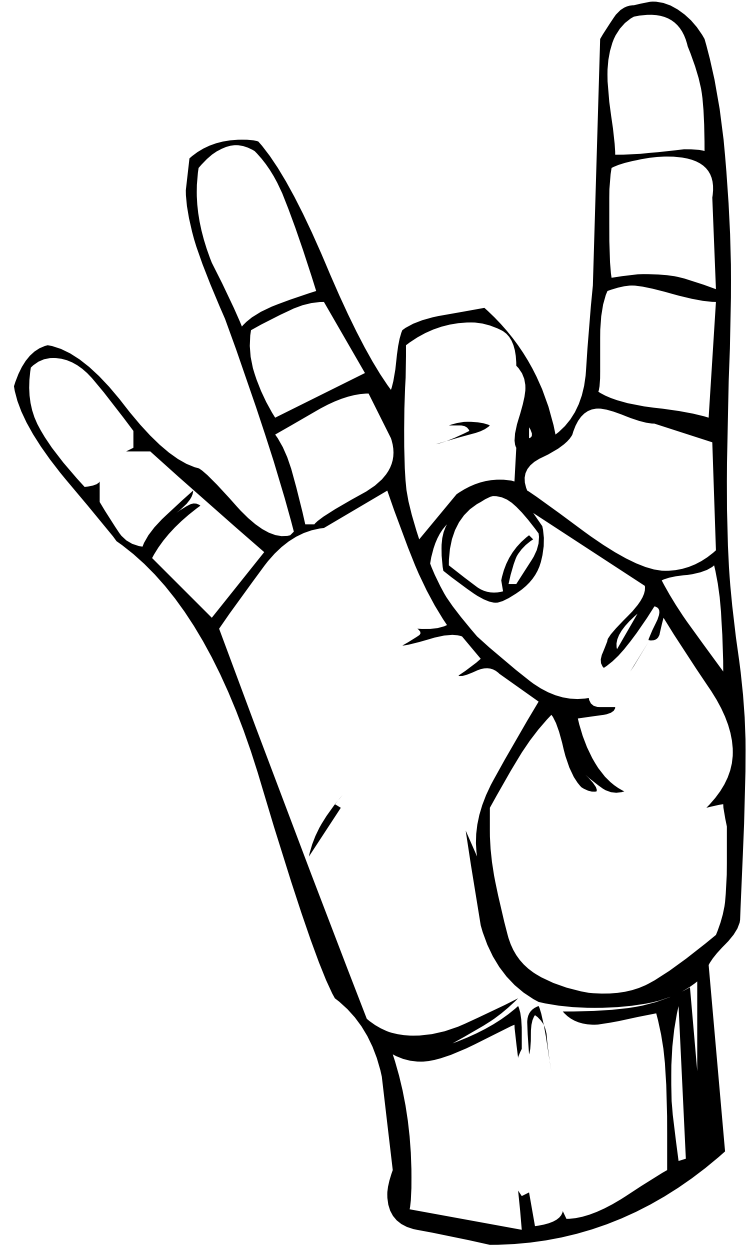


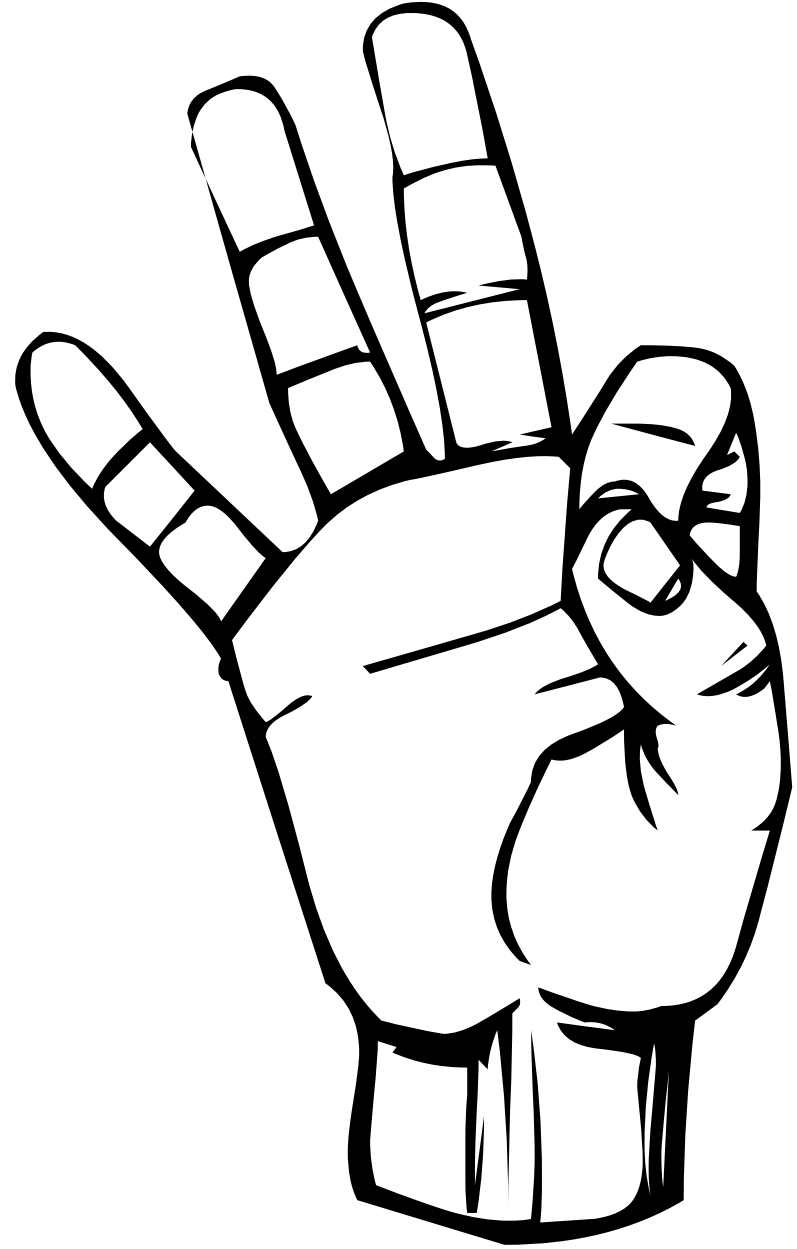




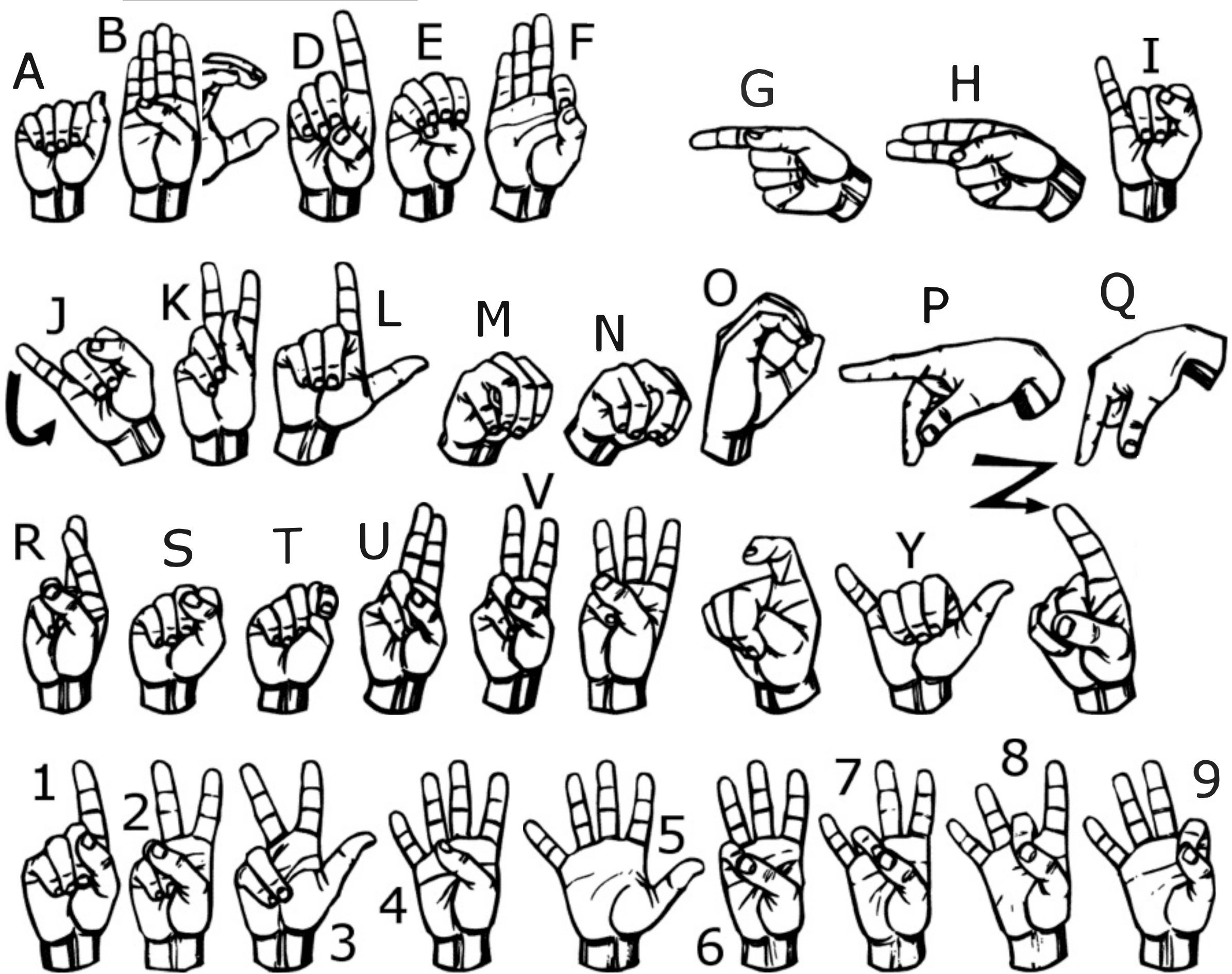








10



REVIEW | **NUMBERS & ABC'S**

3

P

S

Y

N

A

c

0

R

T

w

B

8

F

E

N

G

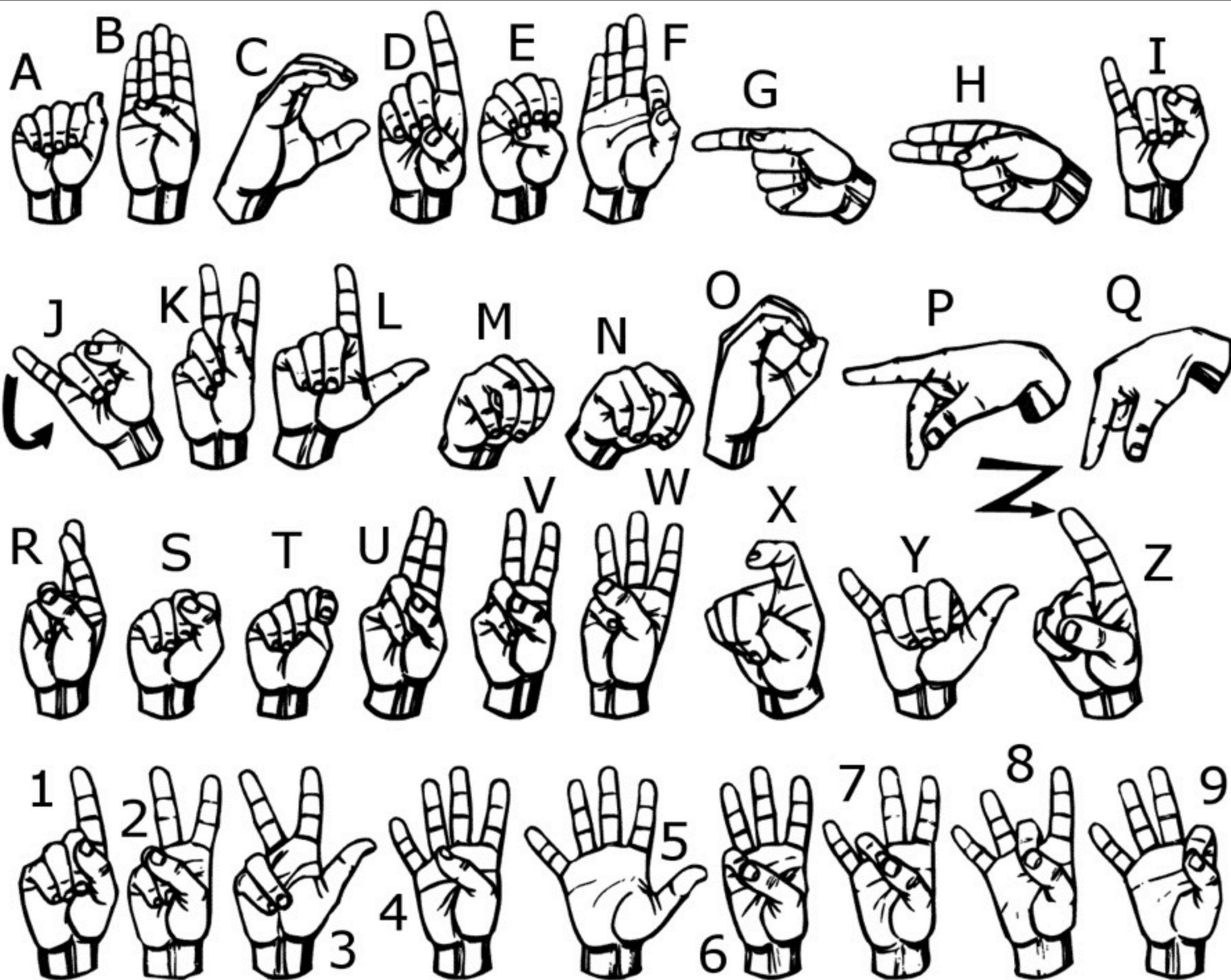
K

6

ACTIVITY | **GUESS THE WORD!**

DIRECTIONS:

- Find a partner.
- You will be asking each other questions, try your best!
- Take turns spelling out a word and your partner gets to guess what word you are spelling.
- If you have any questions, ask me!



Resources

<http://www.tobyfitch.com/asl>